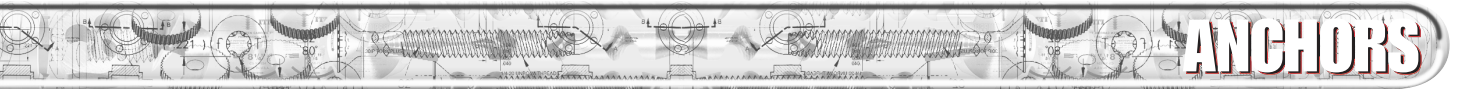


MAIN OFFICE
INTERNATIONAL TOOL MANUFACTURING
71-08 51ST. AVENUE, WOODSIDE, NY 11377
(718) 446-0711 • (800) 247-5696 • FAX (718) 899-6553



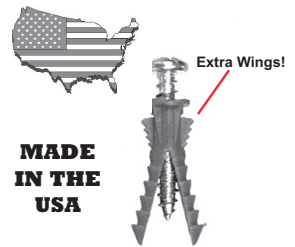
INTERNATIONAL TOOL MANUFACTURING
675-E-PROGRESS CENTER AVE., LAWRENCEVILLE, GA 30043
(770) 962-5454 • (800) 229-1776 • FAX (770) 962-5869



SUPER RIBBED PLASTIC ANCHORS

PART NUMBER	SIZE	SCREW SIZE	ANCHOR TYPE	COLOR	CARTON QTY.	PACKAGED	PRICE / M
SA316Y	3/16" X 7/8"	6 - 8	<i>SUPER RIBBED</i>	YELLOW	40,000	BULK	\$11.91
SA014Y	1/4" X 1-1/4"	8 - 12	<i>SUPER RIBBED</i>	YELLOW	18,000	BULK	\$15.99
SA516Y	5/16" X 1-1/2"	12 - 16	<i>SUPER RIBBED</i>	YELLOW	10,000	BULK	\$27.80

**B
U
L
K**



SUPER RIBBED PLASTIC ANCHORS

PART NUMBER	SIZE	SCREW SIZE	ANCHOR TYPE	COLOR	BAG QTY.	PACKAGED	PRICE PER BAG
BASA316	3/16" X 7/8"	6 - 8	<i>SUPER RIBBED</i>	YELLOW	1,000	BAG	\$14.20
BASA014	1/4" X 1-1/4"	8 - 12	<i>SUPER RIBBED</i>	YELLOW	500	BAG	\$11.40
BASA516	5/16" X 1-1/2"	12 - 16	<i>SUPER RIBBED</i>	YELLOW	500	BAG	\$17.25

**B
A
G**

SUPER RIBBED PLASTIC ANCHORS

PART NUMBER	SIZE	SCREW SIZE	ANCHOR TYPE	COLOR	BAG QTY.	PACKAGED	PRICE PER BAG
BASA316R	3/16" X 7/8"	6 - 8	<i>SUPER RIBBED</i>	YELLOW	100	BOX	\$2.41
BASA014R	1/4" X 1-1/4"	8 - 12	<i>SUPER RIBBED</i>	YELLOW	100	BOX	\$3.10
BASA516R	5/16" X 1-1/2"	12 - 16	<i>SUPER RIBBED</i>	YELLOW	100	BOX	\$5.98

**B
O
X**

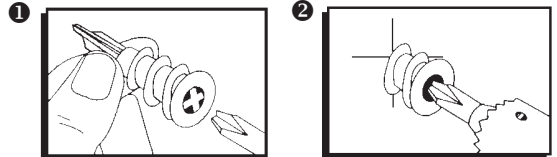
- Bright Yellow.
- Extra Wings to Grip Directly to Wall.
- Locking Lugs Against Pull & Twist.
- Special Exterior Design Prevents Fall Out in Overhead Holes.
- Deep Teeth give Maximum Anchoring in Concrete, and Bite Deeply in Drywall or Wood.
- Unique Expansion Capacity in Soft Material.

NYLON ZAP-IN ANCHORS

PART NUMBER	LENGTH	DESCRIPTION	BOX QTY.	PACKAGED	PRICE / C
EZN1212	1-3/4"	ZAP IN NYLON ANCHOR	100	BOX	\$19.90
EZN1212B	1-3/4"	ZAP IN NYLON ANCHOR	5,000	BULK	\$18.90
EZN1012	1-5/16"	ZAP IN JR. NYLON ANCHOR	100	BOX	\$14.50
EZN1012B	1-5/16"	ZAP IN JR. NYLON ANCHOR	5,000	BULK	\$13.90

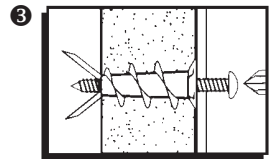
ZINC ZAP-IN ANCHORS

PART NUMBER	LENGTH	DESCRIPTION	BOX QTY.	PACKAGED	PRICE / C
EZZ1212	1-3/4"	ZAP IN ZINC ANCHOR	100	BOX	\$21.98
EZZ1212B	1-3/4"	ZAP IN ZINC ANCHOR	5,000	BULK	\$20.98
EZZ1012	1-5/16"	ZAP IN JR. ZINC ANCHOR	100	BOX	\$18.20
EZZ1012B	1-5/16"	ZAP IN JR. ZINC ANCHOR	5,000	BULK	\$16.90



Insert either #2 or #3 Phillips Driver bit into the recess of Zap-In anchor head. Use screw driver or screw gun.

Push Zap-In anchor into surface of wallboard until the two cutting blades penetrate the surface. Using gentle forward pressure, rotate anchor until collar sets flush to surface of wall.



Put fixture in place, insert screw & tighten until secure.

- Use #8 Screws, minimum 3/4" long.
- Wall board should be 3/8" - 1" thick.

MADE IN USA