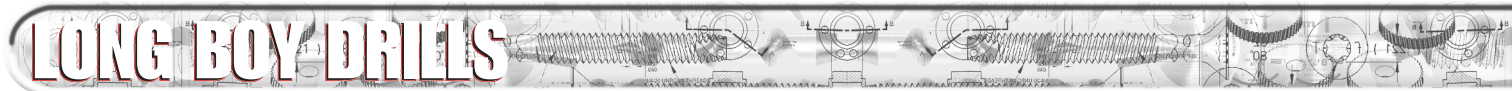


MAIN OFFICE

INTERNATIONAL TOOL MANUFACTURING
71-08 51ST. AVENUE, WOODSIDE, NY 11377
(718) 446-0711 • (800) 247-5696 • FAX (718) 899-6553



INTERNATIONAL TOOL MANUFACTURING
675-E-PROGRESS CENTER AVE., LAWRENCEVILLE, GA 30043
(770) 962-5454 • (800) 229-1776 • FAX (770) 962-5869

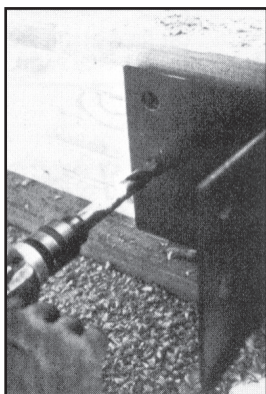


**118°
POINT**



LONG BOY

- Straight Shank To 1/2"
- 1/2" Reduced Shank For Sizes Above 1/2"
- M2 High Speed Steel
- Individually Pouched
- Sharp Cutting Edge To Drill In Many Different Materials:
 - Mild Steel
 - Cast Iron
 - Aluminum
 - Wood
- Imported



- ⊙ Precision point angle for effective penetration through steel and wood.
- ⊙ Extra length flute with continuous cutting edges for drilling deep holes and fast chip removal.
- ⊙ Reduced shank fits all drill motors with 1/2" chucks.
- ⊙ Non-slip grips prevent the bit from spinning in the chuck.

**12" LONG LONG BOY
GENERAL PURPOSE DRILLS HSS**

SERIES 216HS 118° POINT

PART NUMBER	DRILL SIZE	DEC. EQUIV.	O/A LENGTH	FLUTE LENGTH	PRICE EACH
216HS1264	3/16"	.1875	12"	9"	\$12.37
216HS1464	7/32"	.2188	12"	9"	\$13.19
216HS1664	1/4"	.2500	12"	9"	\$13.19
216HS1864	9/32"	.2812	12"	9"	\$14.52
216HS2064	5/16"	.3125	12"	9"	\$15.52
216HS2264	11/32"	.3438	12"	9"	\$16.45
216HS2464	3/8"	.3750	12"	9"	\$17.99
216HS2664	13/32"	.4062	12"	9"	\$19.13
216HS2864	7/16"	.4375	12"	9"	\$26.06
216HS3064	15/32"	.4688	12"	9"	\$27.30
216HS3264	1/2"	.5000	12"	9"	\$28.54
218HS3664	9/16"	.5625	12"	9"	\$48.04
218HS4064	5/8"	.6250	12"	9"	\$53.59
218HS4464	11/16"	.6875	12"	9"	\$62.12
218HS4864	3/4"	.7500	12"	9"	\$78.06
218HS5664	7/8"	.8750	12"	9"	\$92.97
218HS6064	15/16"	.9375	12"	9"	\$107.06
218HS6464	1"	1.000	12"	9"	\$119.70
218HS7264	1-1/8"	1.125	12"	9"	\$128.47

**18" LONG LONG BOY
GENERAL PURPOSE DRILLS HSS**

SERIES 217HS 118° POINT

PART NUMBER	DRILL SIZE	DEC. EQUIV.	O/A LENGTH	FLUTE LENGTH	PRICE EACH
217HS1264	3/16"	.1875	18"	14"	\$25.87
217HS1464	7/32"	.2188	18"	14"	\$36.80
217HS1664	1/4"	.2500	18"	14"	\$28.65
217HS1864	9/32"	.2812	18"	14"	\$29.68
217HS2064	5/16"	.3125	18"	14"	\$31.81
217HS2264	11/32"	.3438	18"	14"	\$34.30
217HS2464	3/8"	.3750	18"	14"	\$37.10
217HS2664	13/32"	.4062	18"	14"	\$46.85
217HS2864	7/16"	.4375	18"	14"	\$49.12
217HS3064	15/32"	.4688	18"	14"	\$59.76
217HS3264	1/2"	.5000	18"	14"	\$62.18
217HS3664	9/16"	.5625	18"	14"	\$80.50
217HS4064	5/8"	.6250	18"	14"	\$80.75
217HS4864	3/4"	.7500	18"	14"	\$101.44