



Made In



- ◆ Carbide Teeth
- ◆ Carbide Pilot
- ◆ Ejector Spring
- ◆ 2" Drilling Depth
- ◆ 3-Flat Shank

- Hard Plastic
- Stucco
- Clay Pipe
- Hardy Board
- Dry Lath & Plaster
- Wood with Nails
- Aluminum Siding
- Hard or Composite Plastic

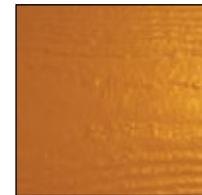
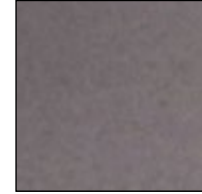
Also Available:

- Extension Shanks
- Replacement Pilots
- Replacement Springs



Composite Cutter

| Part # | Size | OAL | Shank | List |
|--------|--------|-----|-------|----------|
| CHS-16 | 1" | 6" | 1/2" | \$162.53 |
| CHS-18 | 1-1/8" | 6" | 1/2" | \$170.03 |
| CHS-20 | 1-1/4" | 6" | 1/2" | \$173.89 |
| CHS-22 | 1-3/8" | 6" | 1/2" | \$177.75 |
| CHS-24 | 1-1/2" | 6" | 1/2" | \$185.48 |
| CHS-26 | 1-5/8" | 6" | 1/2" | \$191.25 |
| CHS-28 | 1-3/4" | 6" | 1/2" | \$197.06 |
| CHS-32 | 2" | 6" | 1/2" | \$212.51 |
| CHS-34 | 2-1/8" | 6" | 1/2" | \$222.19 |
| CHS-36 | 2-1/4" | 6" | 1/2" | \$231.83 |
| CHS-40 | 2-1/2" | 6" | 1/2" | \$243.45 |
| CHS-48 | 3" | 6" | 1/2" | \$270.49 |
| CHS-64 | 4" | 6" | 1/2" | \$332.29 |



Shank Thread

| Diameter | Thread |
|-------------|---------|
| 3/4" & 7/8" | 1/2"-13 |
| 1" → 4" | 3/4"-10 |

Made In



- ◆ Carbide Teeth
- ◆ HSS Pilot
- ◆ Ejector Spring
- ◆ 2" Drilling Depth
- ◆ 3-Flat Shank

- Pipe
- Trench Duct
- Cellular Metal
- Ferrous Metals
- Non-Ferrous Metals
- Ductile Iron Pipe

Also Available:

- Extension Shanks
- Replacement Pilots
- Replacement Springs



Interrupter

| Part # | Size | OAL | Shank | List |
|--------|--------|-----|-------|----------|
| IC-12 | 3/4" | 6" | 3/8" | \$171.94 |
| IC-14 | 7/8" | 6" | 3/8" | \$173.89 |
| IC-16 | 1" | 6" | 1/2" | \$179.66 |
| IC-18 | 1-1/8" | 6" | 1/2" | \$189.34 |
| IC-20 | 1-1/4" | 6" | 1/2" | \$199.01 |
| IC-22 | 1-3/8" | 6" | 1/2" | \$202.88 |
| IC-24 | 1-1/2" | 6" | 1/2" | \$210.60 |
| IC-28 | 1-3/4" | 6" | 1/2" | \$218.33 |
| IC-32 | 2" | 6" | 1/2" | \$243.45 |
| IC-36 | 2-1/4" | 6" | 1/2" | \$253.09 |
| IC-38 | 2-3/8" | 6" | 1/2" | \$262.76 |
| IC-40 | 2-1/2" | 6" | 1/2" | \$270.49 |
| IC-44 | 2-3/4" | 6" | 1/2" | \$293.66 |
| IC-48 | 3" | 6" | 1/2" | \$318.79 |
| IC-52 | 3-1/4" | 6" | 1/2" | \$347.78 |
| IC-56 | 3-1/2" | 6" | 1/2" | \$370.95 |
| IC-60 | 3-3/4" | 6" | 1/2" | \$392.21 |
| IC-64 | 4" | 6" | 1/2" | \$399.94 |

