

Made In



- ◆ Carbide Teeth
- ◆ Carbide Pilot
- ◆ Ejector Spring
- ◆ 2" Drilling Depth
- ◆ 3-Flat Shank

- Hard Plastic
- Stucco
- Clay Pipe
- Hardy Board
- Dry Lath & Plaster
- Wood with Nails
- Aluminum Siding
- Hard or Composite Plastic

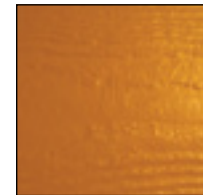
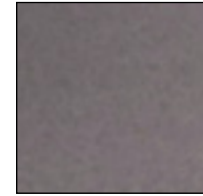
Also Available:

- Extension Shanks
- Replacement Pilots
- Replacement Springs



Composite Cutter

Part #	Size	OAL	Shank	List
CHS-16	1"	6"	1/2"	\$178.78
CHS-18	1-1/8"	6"	1/2"	\$187.03
CHS-20	1-1/4"	6"	1/2"	\$191.28
CHS-22	1-3/8"	6"	1/2"	\$195.53
CHS-24	1-1/2"	6"	1/2"	\$204.02
CHS-26	1-5/8"	6"	1/2"	\$210.38
CHS-28	1-3/4"	6"	1/2"	\$216.77
CHS-32	2"	6"	1/2"	\$233.76
CHS-34	2-1/8"	6"	1/2"	\$244.41
CHS-36	2-1/4"	6"	1/2"	\$255.01
CHS-40	2-1/2"	6"	1/2"	\$267.80
CHS-48	3"	6"	1/2"	\$297.54
CHS-64	4"	6"	1/2"	\$365.52



Made In



- ◆ Carbide Teeth
- ◆ HSS Pilot
- ◆ Ejector Spring
- ◆ 2" Drilling Depth
- ◆ 3-Flat Shank

- Pipe
- Trench Duct
- Cellular Metal
- Ferrous Metals
- Non-Ferrous Metals
- Ductile Iron Pipe

Also Available:

- Extension Shanks
- Replacement Pilots
- Replacement Springs



Interrupter

Part #	Size	OAL	Shank	List
IC-12	3/4"	6"	3/8"	\$189.13
IC-14	7/8"	6"	3/8"	\$191.28
IC-16	1"	6"	1/2"	\$197.63
IC-18	1-1/8"	6"	1/2"	\$208.27
IC-20	1-1/4"	6"	1/2"	\$218.91
IC-22	1-3/8"	6"	1/2"	\$223.16
IC-24	1-1/2"	6"	1/2"	\$231.66
IC-28	1-3/4"	6"	1/2"	\$240.16
IC-32	2"	6"	1/2"	\$267.80
IC-36	2-1/4"	6"	1/2"	\$278.40
IC-38	2-3/8"	6"	1/2"	\$289.04
IC-40	2-1/2"	6"	1/2"	\$297.54
IC-44	2-3/4"	6"	1/2"	\$323.03
IC-48	3"	6"	1/2"	\$350.67
IC-52	3-1/4"	6"	1/2"	\$382.55
IC-56	3-1/2"	6"	1/2"	\$408.05
IC-60	3-3/4"	6"	1/2"	\$431.43
IC-64	4"	6"	1/2"	\$439.93

Shank Thread

Diameter	Thread
3/4" & 7/8"	1/2"-13
1" → 4"	3/4"-10

