



1" Cutting Depth

1" HSS Annular Cutter

Part #	Size	Depth	Pin	List
100MC2864	7/16"	1"	SS-1	\$53.24
100MC3264	1/2"	1"	SS-2	\$53.24
100MC3664	9/16"	1"	SS-3	\$55.66
100MC4064	5/8"	1"	SS-3	\$60.04
100MC4464	11/16"	1"	SS-3	\$64.57
100MC4864	3/4"	1"	SS-3	\$66.01
100MC5264	13/16"	1"	SS-3	\$73.52
100MC5664	7/8"	1"	SS-3	\$79.80
100MC6064	15/16"	1"	SS-3	\$82.63
100MC6464	1"	1"	SS-3	\$92.46
100MC6864	1-1/16"	1"	SS-3	\$107.22
100MC7264	1-1/8"	1"	SS-3	\$117.25
100MC7664	1-3/16"	1"	SS-3	\$119.67
100MC8064	1-1/4"	1"	SS-3	\$121.94
100MC8464	1-5/16"	1"	SS-3	\$140.50
100MC8864	1-3/8"	1"	SS-3	\$160.73
100MC9264	1-7/16"	1"	SS-3	\$179.25
100MC9664	1-1/2"	1"	SS-3	\$211.05
100MC1916	1-9/16"	1"	SS-3	\$215.89
100MC1058	1-5/8"	1"	SS-3	\$218.57
100MC1116	1-11/16"	1"	SS-3	\$220.57
100MC1034	1-3/4"	1"	SS-3	\$224.89
100MC1316	1-13/16"	1"	SS-3	\$232.55
100MC1078	1-7/8"	1"	SS-3	\$242.27
100MC1516	1-15/16"	1"	SS-3	\$251.23
100MC2002	2"	1"	SS-3	\$294.50
100MC2116	2-1/16"	1"	SS-3	\$475.35

TCT – Carbide Tipped Annular Cutters Available. Please call.



Pilot Pins - 1" Cutter

Part #	Description	List
SS-1	1" Pilot Pin (for 7/16" x 1")	\$13.60
SS-2	1" Pilot Pin (for 1/2" x 1")	\$13.60
SS-3	1" Pilot Pin (for 9/16" x 1" +)	\$13.60



Pilot Pins - 2" Cutter

Part #	Description	List
LL-1	2" Pilot Pin (for 7/16" x 2")	\$16.54
LL-2	2" Pilot Pin (for 1/2" x 2")	\$16.54
LL-3	2" Pilot Pin (for 9/16" x 2" +)	\$16.54



2" Cutting Depth

2" HSS Annular Cutter

Part #	Size	Depth	Pin	List
200MC2864	7/16"	2"	LL-1	\$72.08
200MC3264	1/2"	2"	LL-2	\$72.08
200MC3664	9/16"	2"	LL-3	\$74.50
200MC4064	5/8"	2"	LL-3	\$82.73
200MC4464	11/16"	2"	LL-3	\$92.01
200MC4864	3/4"	2"	LL-3	\$97.70
200MC5264	13/16"	2"	LL-3	\$107.22
200MC5664	7/8"	2"	LL-3	\$124.55
200MC6064	15/16"	2"	LL-3	\$126.57
200MC6464	1"	2"	LL-3	\$130.76
200MC6864	1-1/16"	2"	LL-3	\$135.63
200MC7264	1-1/8"	2"	LL-3	\$165.05
200MC7664	1-3/16"	2"	LL-3	\$171.74
200MC8064	1-1/4"	2"	LL-3	\$188.56
200MC8464	1-5/16"	2"	LL-3	\$204.05
200MC8864	1-3/8"	2"	LL-3	\$221.49
200MC9264	1-7/16"	2"	LL-3	\$236.46
200MC9664	1-1/2"	2"	LL-3	\$244.13
200MC1916	1-9/16"	2"	LL-3	\$280.76
200MC1058	1-5/8"	2"	LL-3	\$290.80
200MC1116	1-11/16"	2"	LL-3	\$303.09
200MC1034	1-3/4"	2"	LL-3	\$315.08
200MC1316	1-13/16"	2"	LL-3	\$328.39
200MC1078	1-7/8"	2"	LL-3	\$341.30
200MC1516	1-15/16"	2"	LL-3	\$386.18
200MC2002	2"	2"	LL-3	\$405.84
200MC2116	2-1/16"	2"	LL-3	\$581.80



Steel

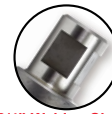


Stainless Cast Iron

- ◆ M2 HSS
- ◆ 3/4" Weldon Shanks
- ◆ Aggressive Cutting Edges
- ◆ No Center Punch Required
- ◆ Cut up to 2"
- ◆ For All Magnetic Drills
- ◆ Sold Individually



MAGNETIC DRILL



3/4" Weldon Shank

Use Cutting Oil



Allows overlap cut on existing holes

ANNULAR CUTTER
M2 HSS